



ARI is an organization that is collaborating and meeting with both specialists and autistic people. That's why their work is so important to me — because this is real information from both scientific and personal perspectives.”

Dariya Orlova-Zhernovaya
Educator, Therapist, Autist, and Parent



**AUTISM RESEARCH
INSTITUTE**

Advancing Science & Education

This is what you helped us **achieve** this year.

Our mission: To advance the health of autistic people through biomedical research and free education.

Autism Research and Investigation

WE AWARDED

Over \$700,000 in Scientific Research Grants

Our donors enable groundbreaking research that advances the understanding of autism and supports the health of autistic people. This year, ARI awarded over \$700,000 in grants to explore critical areas, including biological foundations, therapeutic strategies, and more. Thanks to the generosity of our supporters, we continue to drive innovation and fund research that makes a difference.

“We’re extremely grateful for ARI’s support, which is vital for our research on specific dysfunction in the brain. This will help us determine if new therapies could be developed to target subgroups of autism.

Dr. Philippe Campeau, MD, FCCMG
Université de Montréal

WE PUBLISHED

Quarterly *ARRI Journal* and e-newsletters

This year ARI’s quarterly scientific journal, *Autism Research Review International (ARRI)*, moved online and is now available for free. ARRI highlights emerging findings and is distributed to our global autism networks. ARI also keeps more than 140,000 subscribers informed about novel autism resources and discoveries via our monthly e-newsletter, and our bi-monthly Clinical Research in Autism newsletter communicates research findings to practitioners.

WE COLLABORATED

Scientific Advisory Board and Board of Directors

ARI’s Scientific Advisory Board continues to expand, bringing together top researchers from across the autism field. These volunteer advisors play a vital role in advancing ARI’s mission by supporting research initiatives, contributing to our rigorous grant review process, and sharing their latest findings through webinars, think tanks, and online research meetings. By uniting leaders from the medical and scientific communities, the Advisory Board strengthens ARI’s decades-long commitment to impactful autism research. Additionally, our all-volunteer Board of Directors provides invaluable guidance and oversight to ensure that ARI remains focused on the biomedical research initiatives at the core of our mission.

Collaboration and Education

WE CONVENED

Think Tanks and a Scientific Symposium

Our annual in-person Think Tank offers a dynamic forum for clinicians and researchers to collaborate, exchange ideas, and explore emerging trends in autism research. In addition, ARI hosts a yearly online Scientific Symposium, featuring live presentations of groundbreaking research and interactive discussions. To close out the year, we’re hosting regional think tanks in Boston and New York this December, bringing together local clinicians and researchers to strengthen connections and advance autism-focused initiatives.

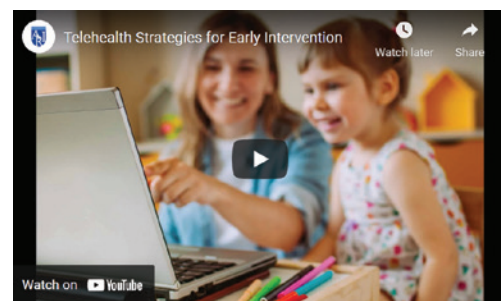
WE PROVIDED

Educational Webinars and YouTube

ARI hosts free, bimonthly webinars featuring leading researchers presenting current findings and care professionals discussing best practices. ARI webinars, both live and recorded, offer real-time, captioned translation support in more than 20 languages, and our clinical webinars offer simultaneous translation facilitated by fluent speakers; four webinar presentations each year are jointly provided with the World Autism Organization.

ARI’s YouTube channel offers free access to recorded webinar presentations, educational videos, social stories, and talks from past conferences. Our channel has garnered more than 1.2 million views and is a valuable tool in democratizing education and expanding autism understanding.

Learn more at AutismWebinars.org



“We’ve had a rise in the number of autistic students, so teachers need more support.

I watch ARI webinars to share usable information with other educators and also to inform my doctorate research.”

Michael Grizzaffi, Ed.S
Special Education Director

WE EDUCATED

Continuing Medical Education

This fall, we released a new series of continuing education talks on autism featuring updates and Q&A on co-occurring metabolic conditions and emerging research on brain imaging. Offered in joint providership with the Cleveland Clinic, the series provides complimentary *AMA PRA Category 1 Credit™* and ABIM MOC points to physicians and is available for viewing by the general public. By connecting physicians to improved standards of care, ARI aims to amplify understanding of the medical nature of autism.

Impact by the numbers:

\$2.3 million+
Research Dollars Granted
over the past 5 years

1.2 million+
Webinar Playbacks to date

1 million+
ATECs Completed to date

150,000+
Continuing Medical Education Playbacks to date

WE DOCUMENTED

National Autism History Museum and Outreach

ARI’s National Autism History Museum offers an engaging and comprehensive look at the prolific history of autism research and discovery. Its interactive exhibits highlight prominent autistic figures and underscore critical moments in the evolution of autism research. Leading researchers from many areas are collaborating with ARI to curate a collection of historical artifacts. Starting in 2024, we extended the program’s outreach by offering on-site educational displays at libraries in the San Diego area to increase awareness and understanding of autism’s history.



Learn more at ARI-CME.org.

Investment in the Autism Community

WE CONNECTED

Global Autism Networks

ARI fosters global connections within the autism community by rapidly sharing key findings and resources. Our research network includes over 130 members worldwide who receive monthly updates on grant opportunities, cutting-edge studies from peer-reviewed journals, and insights into research techniques and best practices. Simultaneously, our global support network engages nearly 230 groups across 77 countries, providing updates on the latest autism research, care strategies, and organizational activities. By bridging these networks, ARI enhances communication, emphasizing emerging discoveries about autism’s underlying biology and evidence-based approaches to care.

WE FACILITATED

Autism Resources

ARI supports critical research initiatives, including a brain tissue bank at the National Institute of Child Health and Human Development (University of Maryland) and a gastrointestinal tissue bank at the Digestive Function Laboratory Repository (Massachusetts General Hospital, Boston). ARI also offers practical support through vibrant social media channels that share the latest news, research, and resources on autism. As a United Nations-registered non-governmental organization (NGO), we prioritize accessibility by translating key articles, webinars, and tools into multiple languages to support a global audience.

WE EMPOWERED

Evidence-based Tools and Assessments

ARI’s Autism Treatment Evaluation Checklist (ATEC) is freely available in 27 languages and is completed by more than 150 users per day. Over the past two years, ARI has released free online tools to assist professionals and parents in identifying treatments that may reduce or eliminate self-injurious behaviors (SIB) and sleep

2024 ARI Research Grant Recipients

With the help of our generous donors, ARI continues to fund important research with real-world application.

For more details about each study, please visit:
Autism.org/ari-funded-research-studies-2024



AUTISM RESEARCH INSTITUTE
Advancing Science & Education

Robert L. Hendren Research Grant Award



Robert L. Hendren, DO
University of California, San Francisco
Medical Center
ARI Board Member
ARI Scientific Advisory
Board Member

2024 Recipients

Philippe Campeau, MD, FCCMG
Marilena Griguoli, PhD

In honor of his many years of support for our work, serving as a member of ARI's Scientific Advisory Board and Board of Directors, the top-scoring research grant proposals funded each year are now recognized as Robert L. Hendren Research Grant Award recipients.

Vardan Arutiunian, PhD



Seattle Children's Research Institute
Excitation / Inhibition Imbalance as a Neural Marker of Language Impairment in Youth with Autism Spectrum Disorder (ASD): Relation to Sex and Language Phenotype



Valentina Ferretti
Università degli Studi di Roma
Investigating the Interplay Between Oxytocin and Neuroinflammation in the Effects of Social Buffering in a Mouse Model of 22q11.2DS

Alessia Butera, PhD
Centro Nazionale per la Ricerca e la Valutazione Preclinica e Clinica dei Farmaci
National Center for Drug Research and Evaluation
Istituto Superiore di Sanità



Gut inflammation as a pharmacological target for ASD



Marilena Griguoli, PhD
Institute of Molecular Biology and Pathology (IBPM-CNR)
European Brain Research Institute (EBRI)
Role of Septal Cholinergic Neurons in ASD Social Novelty Deficits

Philippe Campeau, MD, FCCMG
CHU Sainte-Justine
Université de Montréal



Dissecting the Neuronal Consequences of Altered NuRD Complex Function in Autism



Laura Hewitson, PhD
Johnson Center for Child Health and Development
A Role for the Exposome in Understanding the Biology of Autism Spectrum Disorder

Bradley Ferguson, PhD
University of Missouri
Ecological Monitoring of Autonomic Nervous System Activity and Relationship with Social Communication and Gastrointestinal Symptoms in Autism Spectrum Disorder



Taichi A. Suzuki, PhD
College of Health Solutions
Biodesign Center for Health Through Microbiomes
Arizona State University
Biodesign Institute B230C
Linking Human Ancestry and Microbiome to Predict Autism Treatment Outcomes