

# ADVANCING INDEPENDENT AUTISM RESEARCH AND EDUCATION



**FISCAL YEAR  
TRANSITION REPORT**  
JANUARY 1-JUNE 30, 2025



**AUTISM RESEARCH  
INSTITUTE**  
Advancing Science & Education

# SCIENCE IN ACTION: DISCOVERY, EDUCATION, COLLABORATION



## OUR MISSION

To advance the health of autistic people through biomedical research and free education.

## OUR VISION

Inclusive research and education are the drivers of an evolving, highly individualized standard of care for autistic people.

## OUR VALUES

**RISK-TAKING:** We fund inclusive, early stage, novel research;

**OPTIMISM:** We believe ARI's work can positively affect the health of autistic people;

**ETHICS:** We democratize information and learning to amplify the need for appropriate, individualized healthcare for autistic people;

**INDIVIDUALITY:** We respect and include autistic people, and their families, in our work;

**HONESTY:** We put science first. We fund research and facilitate the transfer of evidence-based information. We are focused on generating and sharing scientific findings that are peer-reviewed. We fund studies aimed at producing quality output in respected journals and publications;

**TRANSPARENCY:** We serve the autism community and the general public.



For nearly 60 years, ARI has advanced the health and well-being of autistic individuals through scientific discovery, education, and collaboration. Your generosity makes this work possible and supports key programs, including:

- **Scientific Research Grants** that drive innovative studies into autism's underlying biology
- **Free, online webinars** offering reliable, evidence-based information to families, professionals, and individuals worldwide
- **ARI's Scientific Think Tanks** where leading researchers and clinicians share insights and shape future directions
- **Continuing medical education programs** that help professionals compassionately support the autism community



**AUTISM RESEARCH  
INSTITUTE**

Advancing Science & Education

## Message from ARI

Advancing understanding of autism requires independent research, trusted information, and collaboration across the scientific and clinical communities. At the Autism Research Institute, this work takes many forms, funding research grants, facilitating scientific think tanks, producing complimentary medical education for clinicians, and offering free expert webinars and resources.

Through these efforts, we pursue new frontiers in biomedical research, share up-to-date, evidence-based information, and help communities access practical knowledge that supports the health needs of autistic people.

For more than half a century, the Autism Research Institute has worked alongside autistic individuals, families, clinicians, and researchers to deepen biomedical understanding of autism and improve care. We help equip physicians, caregivers, and families with tools that support more personalized and compassionate approaches. Moments like this remind us how much independent autism research and education matter now—for autistic people and their families seeking answers, clinicians providing care, and communities working to better understand the medical aspects of autism.

In 2025, the Autism Research Institute transitioned its fiscal year from the calendar year to a July 1–June 30 cycle. This booklet reflects a six-month transition (“stub-year”) impact report covering January 1 through June 30, 2025, highlighting key initiatives during this period.

We are deeply grateful to our donors, volunteers, board members, researchers, and supporters whose generosity and dedication make this work possible.



**Stephen M. Edelson, PhD**  
Chief Science Officer  
Autism Research Institute



**Denise Fulton**  
Chief Operating Officer  
Autism Research Institute

**“ THANKS TO YOUR SUPPORT, WE WILL BE ABLE TO PILOT AN INNOVATIVE APPROACH TO AUTISM RESEARCH THAT WILL MAKE A DIFFERENCE TO AUTISTIC PEOPLE AND THEIR FAMILIES.”**

KATIE MCNAIR, PHD  
BOSTON CHILDREN'S HOSPITAL  
2025 ARI SCIENTIFIC RESEARCH  
GRANT RECIPIENT



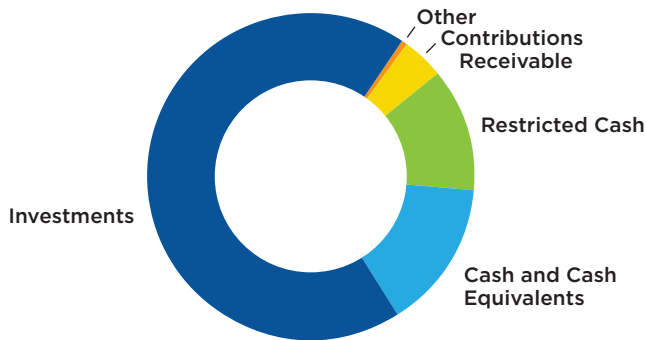
# Stewardship Overview

## Transparency

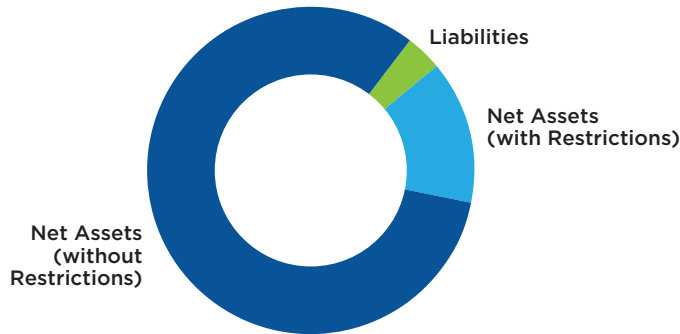
ARI is sustained by generous supporters who share our commitment to improving the health and well-being of autistic people. We are dedicated to responsible stewardship and transparency as we advance impactful autism research and provide trusted information for professionals, autistic individuals, and families.

View our financial statements at:  
Autism.org/financial-information.

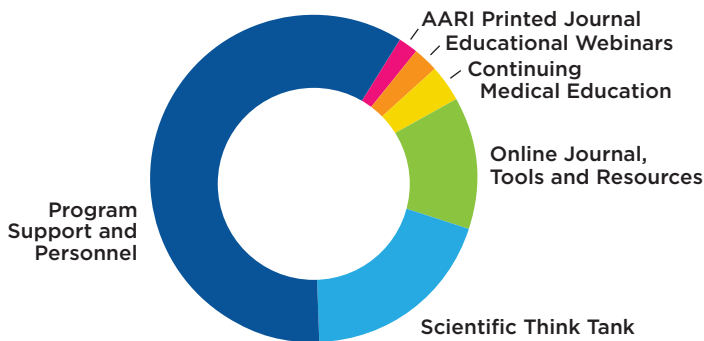
**ASSETS COMPOSITION**  
January 1-June 30, 2025



**NET ASSETS VS. LIABILITIES**  
January 1-June 30, 2025



**ARI PROGRAM EXPENSES BREAKDOWN**  
January 1-June 30, 2025



## Stub-Year 2025 Financial Summary

### Statement of Financial Position January 1-June 30, 2025

ASSETS	Jan 1-June 30, 2025
Cash and Cash Equivalents	906,379
Contributions Receivable	269,402
Prepaid and Deferred Expenses	3,906
Investments (at Market)	4,294,842
Property and Equipment (Net)	15,101

**Total Assets 5,489,630**

LIABILITIES AND NET ASSETS	Jan 1-June 30, 2025
Accounts Payable	121,682
Other Payables	72,764
Research Grants Payable	0

**Total Liabilities 194,446**

Net Assets	
Without Donor Restrictions	4,524,628
With Donor Restrictions	770,556

**Total Net Assets 5,295,184**

**Total Liabilities and Net Assets 5,489,630**

SUPPORT AND REVENUE	Jan 1-June 30, 2025
Contributions and Gifts	200,519
Membership Dues	2,532
Investment return, net	286,920

**Total Support and Revenue 489,971**

EXPENSES	
<b>Programs and Services</b>	
ARRI Printed Journal	8,058
Educational Webinars	12,039
Continuing Medical Education	15,442
Scientific Think Tank	87,081
Online Journal, Tools and Resources	60,022
Program Support and Personnel	270,494

**Total Program Expenses 453,136**

<b>Supporting Services</b>	
Management and General	123,036
Fundraising	47,372

**Total Supporting Services Expenses 170,048**

**Total Expenses 623,544**

<b>Non-Operating In Net Assets</b>	
Investment Income and Other	286,920

<b>Changes in Net Assets</b>	
Total Change in Net Assets	-133,537
Net Assets Beginning of stub-year	5,428,757
Net Assets, End of stub-year	\$5,295,184

*In 2025, the Autism Research Institute transitioned its fiscal year from the calendar year to a July 1-June 30 cycle. This summary reflects a six-month transition ("stub-year") summary covering January 1 through June 30, 2025, highlighting key financials for this period.*

## Mid-Year Program Impact Summary: January–June 2025

### Supporting Research, Sharing Knowledge, and Building Understanding

ARI is committed to advancing early-stage autism research while sharing the latest science-based information with the entire autism community. Scientific progress continues to reinforce ARI's longstanding view that understanding and addressing co-occurring medical conditions is essential to effectively supporting autistic individuals.

#### Think Tanks and Symposiums: Bringing Researchers and Clinicians Together

Since 1995, ARI has convened experts through its annual Scientific Think Tank meetings to explore emerging questions and examine promising areas of research. ARI also funds and sponsors consensus meetings that foster ongoing collaboration and discussion around new findings. These efforts help shape how researchers investigate the causes of autism and develop effective approaches to care and support. In 2025, ARI sponsored the first-ever United Nations Think Tank on Autism.

Learn more at [Autism.org/ARI-Scientific-Think-Tanks](https://Autism.org/ARI-Scientific-Think-Tanks)

#### Free Online Continuing Education for Healthcare Professionals

ARI partners with leading experts to provide professional education that equips clinicians with the knowledge needed to offer safe, effective support for autistic individuals. We continue to offer complimentary CME-certified online education that expands understanding of the medical aspects of autism.

Learn more at [Autism.org/CME](https://Autism.org/CME)

#### Free Online Webinars

ARI's webinars highlight the unique needs and strengths of autistic individuals while equipping families, professionals, and community members with practical strategies to support health, well-being, and quality of life. These free programs have reached more than 1.3 million views worldwide, demonstrating the powerful impact of accessible education while representing just 3% of ARI's annual program expenses.

Learn more at [Autism.org/Webinars](https://Autism.org/Webinars)

#### Research on Aging and Autism

ARI's leadership actively collaborates with an international group of researchers focused on improving quality of life and healthcare experiences for older adults with autism and related intellectual and developmental disabilities.

#### Quarterly ARRI Journal and e-newsletters

ARI shares the latest autism research with a global audience through its award-winning journal, *Autism Research Review International (ARRI)*, available free online. Each quarterly issue highlights emerging discoveries and advances in understanding autism. Our Clinical Research in Autism newsletter delivers research insights to practitioners, while our monthly e-newsletter reaches more than 140,000 subscribers with updates on new studies, tools, and resources.

#### National Autism History Museum and Outreach

ARI's National Autism History Museum highlights the history of autism research through interactive exhibits featuring prominent autistic figures and pivotal moments in scientific discovery. Researchers are collaborating with ARI to curate a growing collection of historical artifacts. The program also brings educational pop-up exhibits to public libraries to expand awareness of autism's history, with four installations in San Diego, California, and Memphis, Tennessee between 2024 and 2025.

#### International Outreach

ARI is a non-governmental organization (NGO) that provides educational resources and tools to individuals and organizations around the world. Our outreach includes collaboration with clinician networks and research groups internationally, particularly in regions where awareness and support are still developing, such as parts of Eastern Europe and South America, as well as translation of the Autism Evaluation Checklist (ATEC).

#### Global Autism Networks

ARI also supports a global community of researchers and advocates. Our research network includes more than 130 members worldwide who receive monthly updates on grant opportunities, recent peer-reviewed studies, and insights into research methods and best practices. In addition, our global support network connects 265 groups across 78 countries, keeping them informed about current understanding of autism, evidence-based care strategies, and ARI initiatives.

#### Scientific Research Grants

With support from our donors, ARI funds early-stage biomedical research that expands our understanding of autism and improves health outcomes for autistic individuals. During the first half of 2025, ARI reviewed applications for its annual research grant cycle, with nearly \$600,000 in awards announced later in the year supporting studies of biological mechanisms, emerging therapies, and other priority areas.

# Advancing Research and Education for Health and Understanding

## ARI Board of Directors



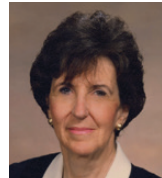
Kelly Barnhill, MBA, CN, CCN  
BOARD CHAIR  
Scientific Advisory Board Member  
*The Johnson Center for  
Child Health & Development*



Harland Winter, MD  
SECRETARY  
Scientific Advisory Board Member  
*Massachusetts General Hospital;  
Harvard Medical School*



Robert L. Hendren, DO  
BOARD VICE CHAIR  
Scientific Advisory Board Member  
*University of California, San Francisco  
Medical Center*



Margaret Bauman, MD  
Scientific Advisory Board Member  
*Boston University School of Medicine*

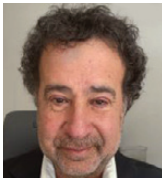


James Walker  
TREASURER  
*Chief Operating Officer  
Adams Street Partners  
Chicago, IL*



Wenn Lawson, PhD  
*Teaching Fellow, Birmingham University, UK;  
Research Officer, Macquarie University, NSW,  
Australia; University of Western Australia,  
and Curtin University, WA*

## ARI Staff and Key Volunteers



Stephen M. Edelson, PhD  
*Chief Science Officer*



Rebecca McKenney  
*Office Manager*

### Key Volunteers

- Jane B. Johnson  
*Think Tank Coordinator*
- Caroline Bissett Bogart, JD  
*ARI Finance Committee Volunteer*



Denise Fulton  
*Chief Operating Officer*



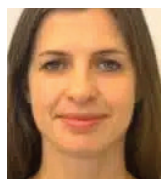
Meaghan Weldele  
*Content Consultant*

### Consultant

- Chris Cava Preston  
*Art Direction*



Melanie Glock  
*Communications and  
Online Learning Specialist*



Nataliya Vasylevskaya  
*Consultant –  
Outreach Coordinator*



**ARI's Scientific Advisory Board** provides informed support and direction for our research initiatives. Dr. Stephen M. Edelson leads the group, assembling leaders in the medical and scientific community in order to further ARI's ongoing commitment to research that makes a difference.

**ARI Scientific Advisory Board**



James B. Adams, PhD  
*Arizona State University*



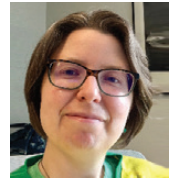
Paul Ashwood, PhD  
*University of California, Davis  
MIND Institute*



David Beversdorf, MD  
*University of Missouri*



Robert E. Burrier, PhD  
*Stemina Biomarker Discovery*



Emily Casanova, PhD  
*Loyola University*



Bradley Ferguson, PhD  
*University of Missouri*



June Groden, PhD  
*Groden Center  
Providence, RI*



Andrea Gropman, MD  
*Children's National Hospital  
Washington, DC*



Juergen Hahn, MS, PhD  
*Rensselaer Polytechnic Institute*



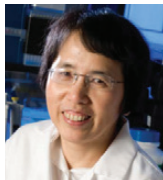
Laura Hewitson, PhD  
*The Johnson Center for  
Child Health and Development*



Mady Hornig, MA, MD  
*The Feinstein Institutes  
for Medical Research,  
Northwell Health*



Jill James, PhD  
*University of Arkansas for  
Medical Sciences (retired)*



Harumi Jyonouchi, MD  
*Saint Peter's University Hospital  
Robert Wood Johnson  
University Hospital*



Rosa Krajmalnik-Brown,  
PhD  
*Arizona State University*



Edward Levin, PhD  
*Duke University*



Lauren Moskowitz, PhD  
*St. John's University*



Robert Rubin, PhD  
*Resident Scholar  
Mathematics Department  
Whittier College*



Andrey Rzhetsky, PhD  
*The University of Chicago*



Kenneth Sassower, MD  
*Massachusetts General Hospital  
Harvard Medical School*



Judy Van de Water, PhD  
*University of California, Davis  
MIND Institute*



Daniel Vogt, PhD  
*Michigan State University*



Marc Weisskopf, ScD, PhD  
*Harvard University*

Not pictured:  
Mary Coleman, MD  
*Foundation for Autism Research*



**AUTISM RESEARCH INSTITUTE**  
Advancing Science & Education

April is Autism Science Month

Non-Profit Org  
U.S. Postage  
PAID  
LITHTEX NW

4182 Adams Avenue  
San Diego, CA 92116

619-281-7165 phone  
833-281-7165 fax

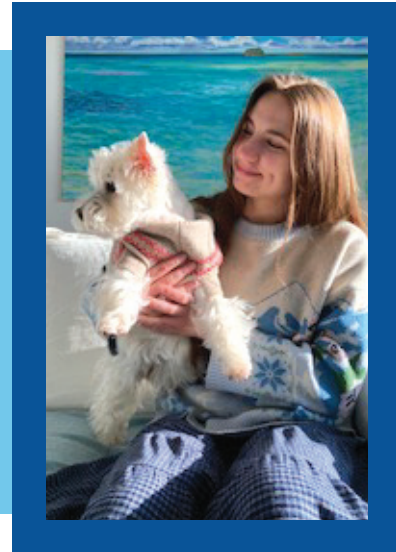
Autism.org

Connect with the Autism Research Institute



“ **HAVING ACCESS TO INFORMATION OF THIS QUALITY, INFORMED BY YEARS OF EXPERTISE, IS INVALUABLE. I HAVE WALKED AWAY WITH GREAT TIPS AND A BROADER PERSPECTIVE.”**

JOY  
BRUSSELS, BELGIUM  
ARI WEBINAR ATTENDEE



**Together we can make a difference.**  
Help us reach our goals. Every gift makes an impact.

**\$1,000**

will fund:

**two webinars featuring expert presenters**

Each talk serves up to 10,000 viewers in real-time with online playback offered later the same day.

**\$5,000**

will help fund:

**Think Tanks**

that provide scientists with opportunities to forge collaborations and grasp the complexities of autism, allowing them to make greater strides faster.

**\$15,000**

will fund:

**webinars for medical professionals**

(complimentary continuing education)

We've supported more than 30,000 physicians and others in the past five years.

**\$100,000**

will fund:

**a grant for promising new research**

(early-stage investigational)

ARI provided researchers with more than \$2.5 million in grants in the past five years.



Please use the enclosed donation envelope or visit [Autism.org/donate](https://autism.org/donate) to give today.

*Contributions are tax deductible as allowable by law. Fed ID No. 95-2548452.*

**Give with Confidence.** The Autism Research Institute's strong financial health and commitment to accountability and transparency have consistently earned Charity Navigator's highest rating (4-Stars), Candid GuideStar's highest rating (Platinum), and a badge from Great Non-Profits.

The Autism Research Institute is a non-profit 501(c)3 organization focused on conducting and sponsoring research aimed at improving the quality of life for today's generation of children and adults with autism.



Scan the QR code to view this fiscal year transition report online.  
[Autism.org/2025\\_Annual](https://autism.org/2025_Annual)