

# IMPACT REPORT

JANUARY 1-DECEMBER 31, 2021

How far did  
your gift **reach?**



AUTISM RESEARCH INSTITUTE  
*Autism is Treatable*

## Our work

Made possible through your support.

### Our Mission

To support the health and well-being of people affected by autism through innovative, impactful research and education.

### Our Community

**1 in 54** identified with Autism Spectrum Disorder

Recent statistics from the Centers for Disease Control and Prevention (CDC) underscore the continuing need for autism research funding.



### Our Commitment

More than **88¢** of every **\$1**

received by ARI directly funds research and education efforts.

Our past audits and annual reports are available online at: [Autism.org/financial-information](https://Autism.org/financial-information)

### Our Gratitude

Our work is only possible through the partnership of our donors, funders, families, and volunteers. We are so grateful for your support for research that makes a difference.



**You funded** innovative scientific research.

More than **\$300,000** in research grants in 2021

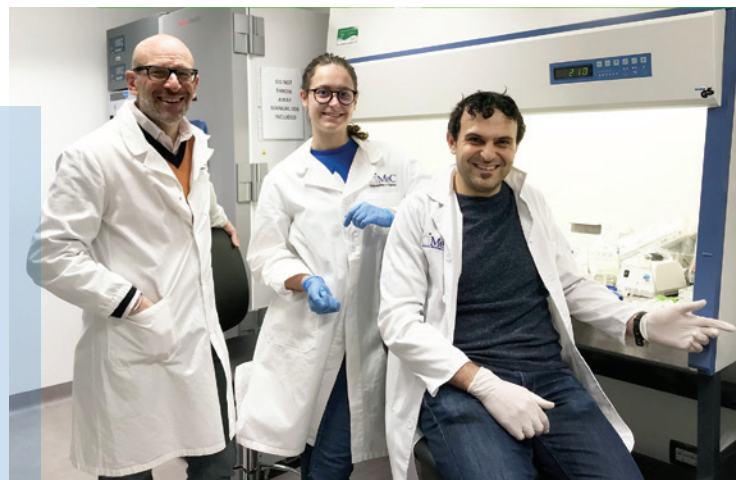


**Give with confidence.** All grant applications are reviewed through a juried process facilitated by ARI's Scientific Advisory Board.



Through the generosity of ARI, my lab will have the opportunity to study the potential benefit of anti-inflammatory treatments in the cerebellum — a brain area important in motor control. This could open new doors for novel treatments of autism. Thank you for your help and support.”

**Yuri Bozzi, PhD ~ 2021 ARI Grant Recipient**  
Center for Mind/Brain Sciences  
University of Trento  
Italy



Yuri Bozzi, PhD, Caterina Tobia, and Luca Pangrazzi (left to right), at work at the CIMeC – Center for Mind/Brain Sciences.

**You helped** parents, medical professionals, and researchers.

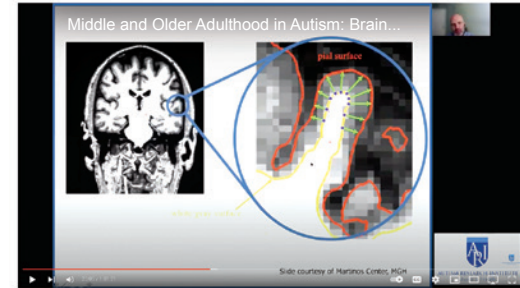
**Our online presence** expanded during the pandemic through our website, online tools, live webinars, and continuing-education offerings — and we facilitated our first-ever, online ARI Scientific Meeting.

**4,777** + **140,400** + **6,136** + **1,080**  
live webinar participants    webinar playbacks    participation certificates    Continuing Medical Education credits

Webinar and continuing-education topics in 2021 included: epilepsy, nutrition, behavioral support, assessment, educational therapies, adult issues, and more.

**= 38,271** total learning hours in 2021

**24** webinar topics    **22** webinar speakers



**You networked** worldwide resources and outreach.

**Our worldwide network expanded to 226 parent support groups in 77 countries, and our subscribers continue to increase.**

**138,000+** subscribers  
monthly e-newsletter

**10,000+** subscribers  
monthly clinical research e-newsletter

**= 145,400+** total subscribers:  
individuals, caregivers, and clinicians

**36th year of the *Autism Review International***  
ARI's quarterly journal

**The Autism Treatment Evaluation Checklist (ATEC)**  
is online in 25 languages  
and nearly 40,000 were submitted in 2021

**Monthly International Aging and Autism Working Group**

**ARI is a Non-Governmental Organization (NGO) of the United Nations.**





AUTISM RESEARCH INSTITUTE  
*Autism is Treatable*

4182 Adams Avenue  
San Diego, CA 92116

619-281-7165 phone  
619-563-6840 fax

Autism.org  
ARI's impact report is also available online: [Autism.org/impact](https://autism.org/impact)

Connect with the Autism Research Institute



Non-Profit Org  
U.S. Postage  
**PAID**  
LITHTEX NW



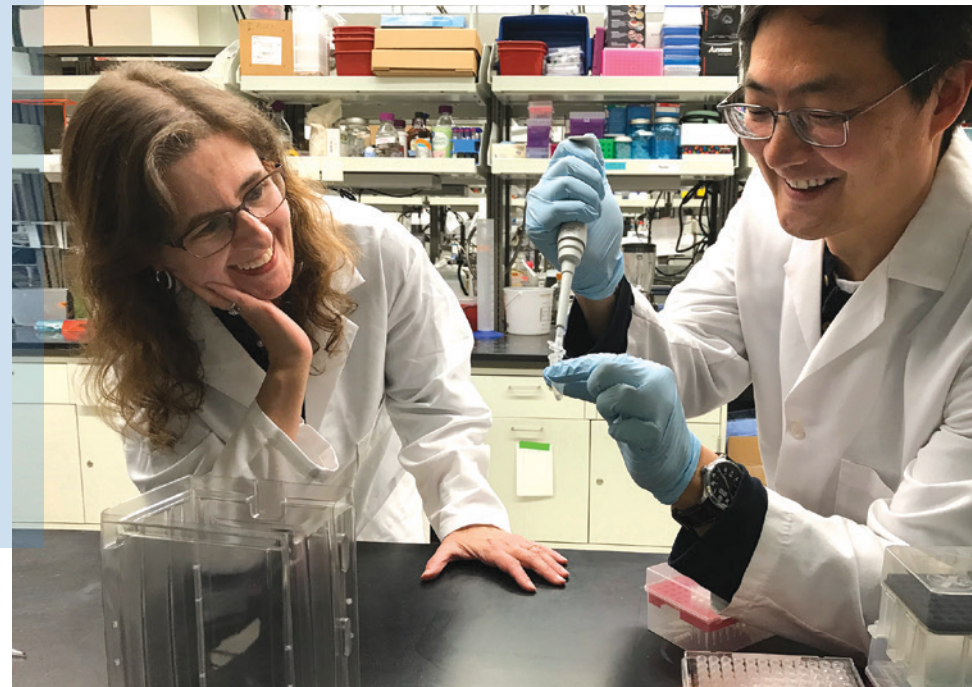
**I am thankful to the Autism Research Institute — and to all who support their mission — for funding this latest grant** as we continue to investigate possible changes that occur with microbiota transfer therapy.

ARI provided the seed funding that allowed us to establish that children with autism may have unique microbiota — this data led to the evidence for microbiota treatments we are investigating now.”

**Rosa Krajmalnik-Brown, PhD**  
**2021 ARI Grant Recipient**  
Arizona State University

## You have made a difference. Thank you.

Please know that your gift impacts so many individuals and families, through the research and free educational efforts of ARI.



**April is Autism Science Month**

Photo Credit: Srivatsan Mohana Rangan

